

The Canadian Field-Naturalist

SUPPLEMENTARY MATERIALS:

Distribution and habitat use of Canada Goose (*Branta canadensis*) during spring and fall migration along the James Bay east coast

MANON SORAIS, MARTIN PATENAUDE-MONETTE, ARMAND LAROCQUE, BRIGITTE LEBLON, and JEAN-FRANÇOIS GIROUX

TABLE S1. List of Landsat-8 OLI optical images used as a function of the season to characterize habitat composition on the east coast of James Bay, Canada.

Season	Date	Image ID
Spring	2020/06/30	LC08_LITP_020022_20200630_20200708_01_T1
		LC08_LITP_020023_20200630_20200708_01_T1
		LC08_LITP_020024_20200630_20200708_01_T1
Summer	2018/07/11	LC08_LITP_020022_20180711_20180717_01_T1
		LC08_LITP_020023_20180711_20180717_01_T1
		LC08_LITP_020024_20180711_20180717_01_T1
Fall	2017/09/10	LC08_LITP_020022_20170910_20170927_01_T1
		LC08_LITP_020023_20170910_20170927_01_T1
		LC08_LITP_020024_20170910_20170927_01_T1

TABLE S2. List of the Sentinel-1 C-band imagery used as a function of the season, orbit, and polarization to characterize habitat composition on the east coast of James Bay, Canada.

Season	Orbit	Image ID
Ascending	C-VH, C-VV	S1B_IW_GRDH_1SDV_20200706T230135_20200706T230200_022357_02A6EF_6886
		S1B_IW_GRDH_1SDV_20200706T230200_20200706T230225_022357_02A6EF_592B
		S1B_IW_GRDH_1SDV_20200706T230225_20200706T230252_022357_02A6EF_2654
Descending	C-HH, C-HV	S1B_EW_GRDM_1SDH_20200626T113424_20200626T113524_022204_02A245_2171
		S1B_EW_GRDM_1SDH_20200626T113524_20200626T113553_022204_02A245_886E
Ascending	C-VH, C-VV	S1B_IW_GRDH_1SDV_20180705T230122_20180705T230147_011682_0157CC_A2CA
		S1B_IW_GRDH_1SDV_20180705T230147_20180705T230212_011682_0157CC_ECE3
		S1B_IW_GRDH_1SDV_20180705T230212_20180705T230240_011682_0157CC_460D
Descending	C-HH, C-HV	S1B_EW_GRDM_1SDH_20180714T112541_20180714T112641_011806_015B97_C7B6
		S1B_EW_GRDM_1SDH_20180714T112641_20180714T112730_011806_015B97_75D8
Fall ascending	C-VH, C-VV	S1B_IW_GRDH_1SDV_20171002T230120_20171002T230144_007657_00D859_3867
		S1B_IW_GRDH_1SDV_20171002T230145_20171002T230209_007657_00D859_2428
		S1B_IW_GRDH_1SDV_20171002T230210_20171002T230237_007657_00D859_72C9
Descending	C-HH, C-HV	S1B_EW_GRDM_1SDH_20170910T113409_20170910T113509_007329_00CEDC_7FBC
		S1B_EW_GRDM_1SDH_20170910T113509_20170910T113538_007329_00CEDC_00C3

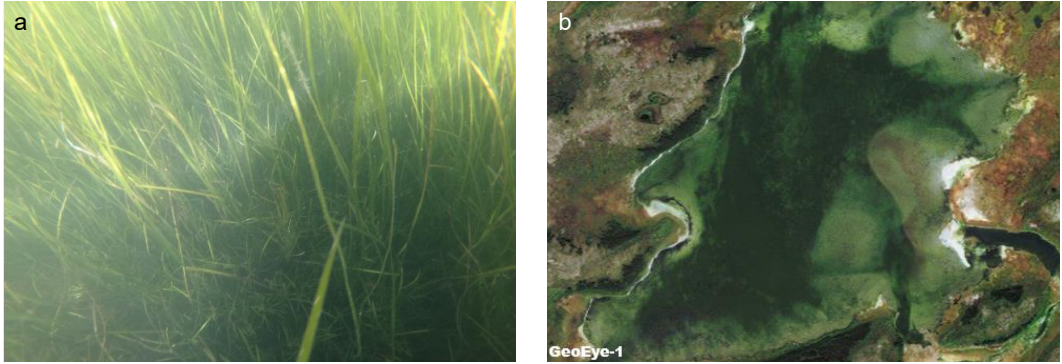


FIGURE S1. Photo and satellite image of Common Eelgrass (*Zostera marina* L.). Photos: Armand Larocque.

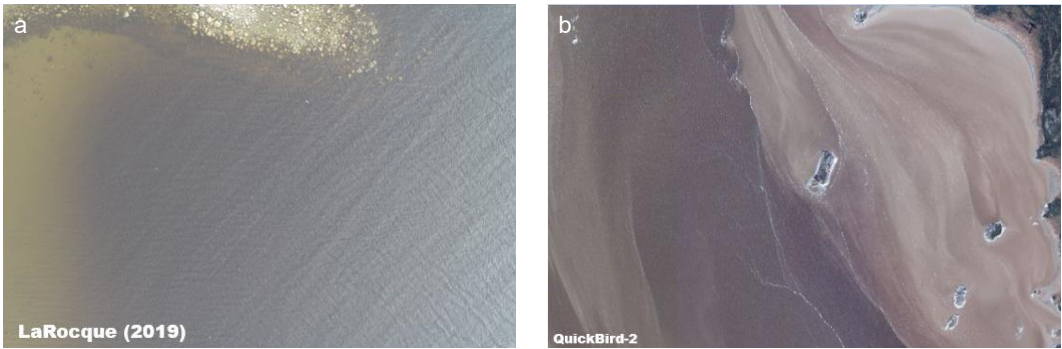


FIGURE S2. Photo and satellite image of turbid water. Photos: Armand Larocque.

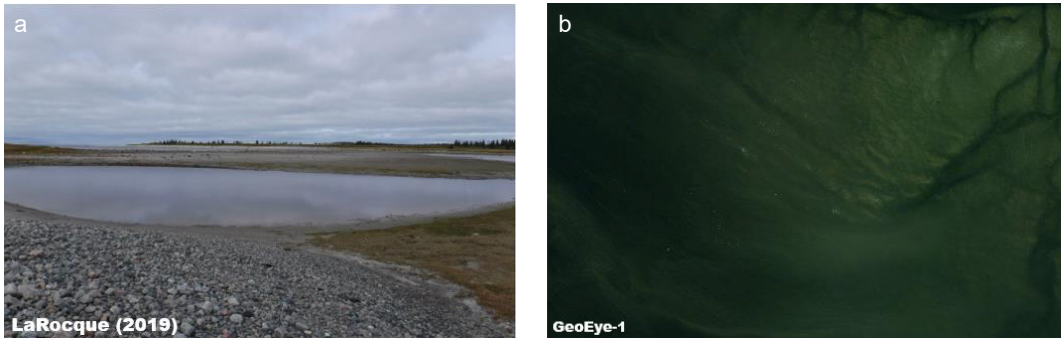


FIGURE S3. Photo and satellite image of shallow water. Photos: Armand Larocque.

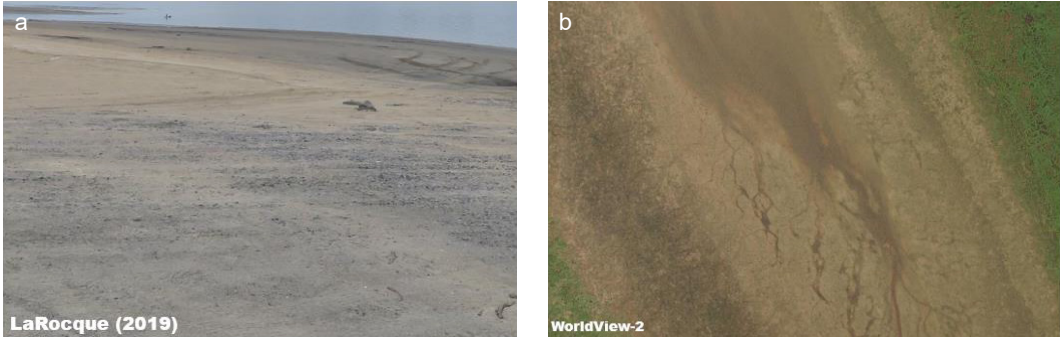


FIGURE S4. Photo and satellite image of tidal flat. Photos: Armand Larocque.

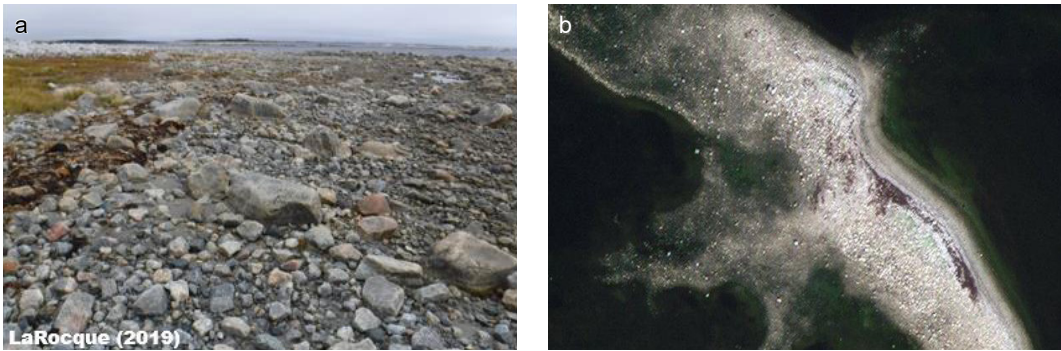


FIGURE S5. Photo and satellite image of cobble beach. Photos: Armand Larocque.

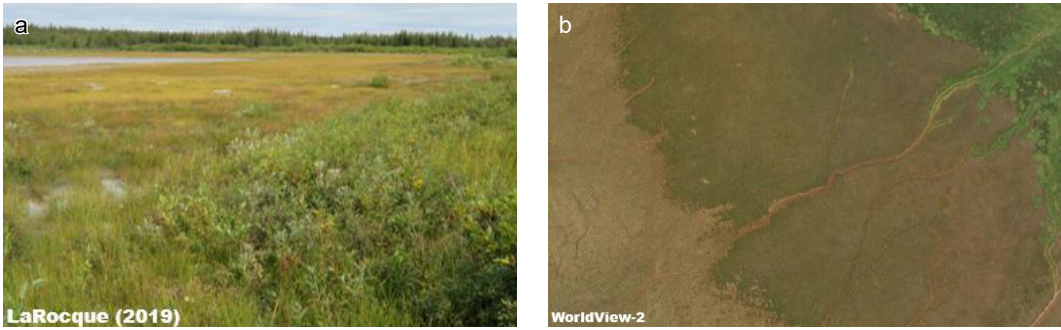


FIGURE S6. Photo and satellite image of salt marsh. Photos: Armand Larocque.

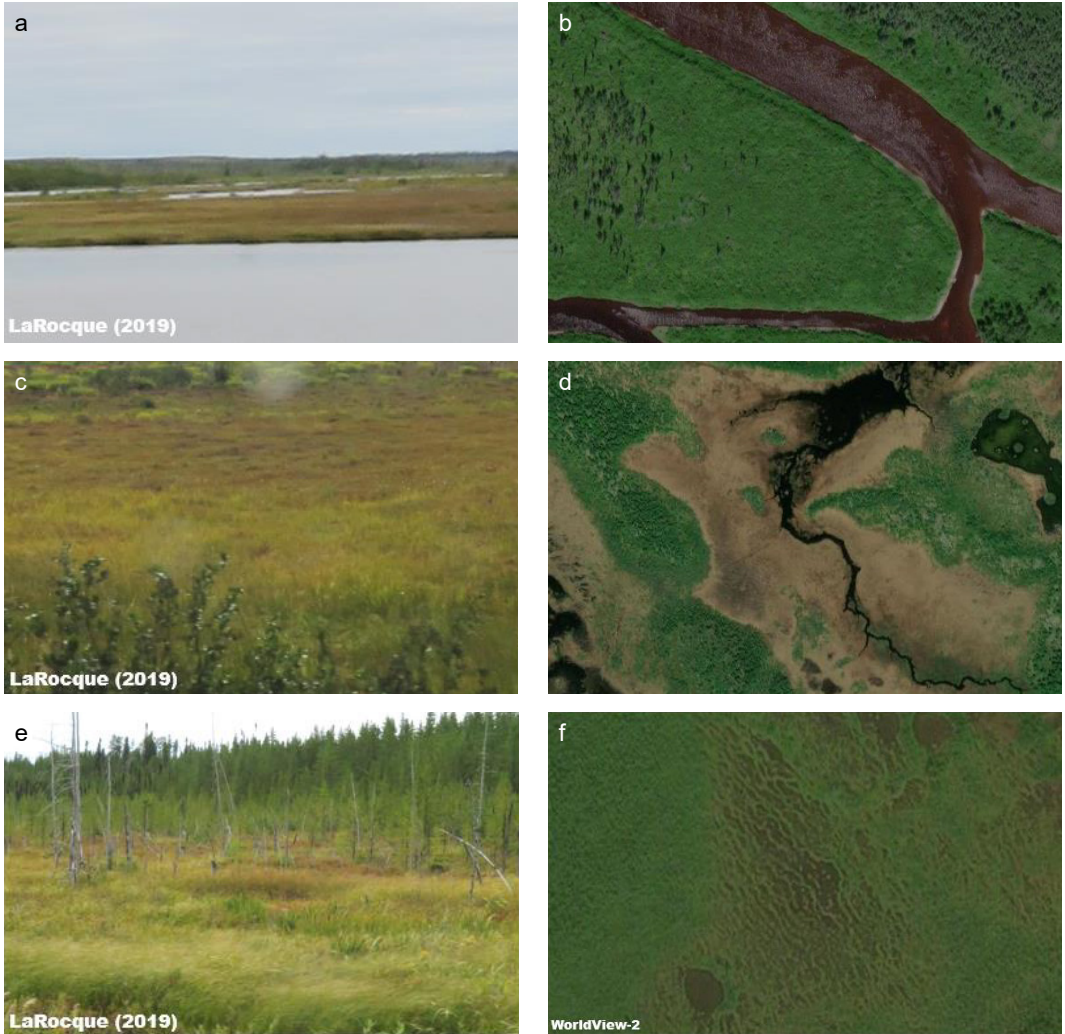


FIGURE S7. Photo and satellite image of freshwater wetlands. This habitat regrouped habitats initially classified as freshwater marsh (upper panels), open fen (middle panels), and string fen (lower panels). Photos: Armand Larocque.

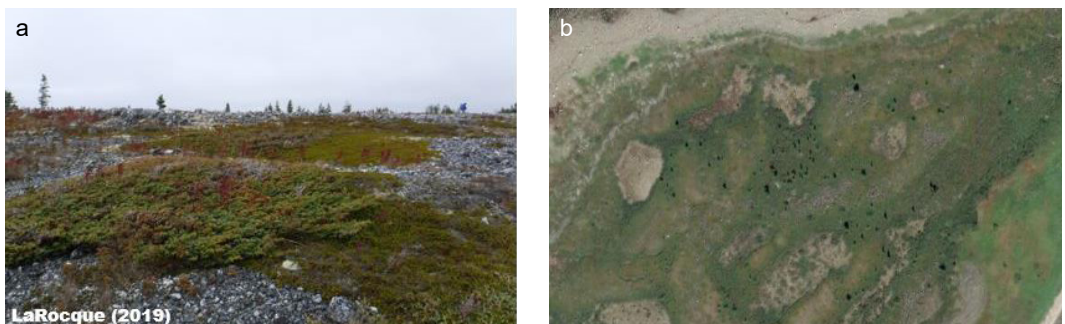


FIGURE S8. Photo and satellite image of tundra. Photos: Armand Larocque.

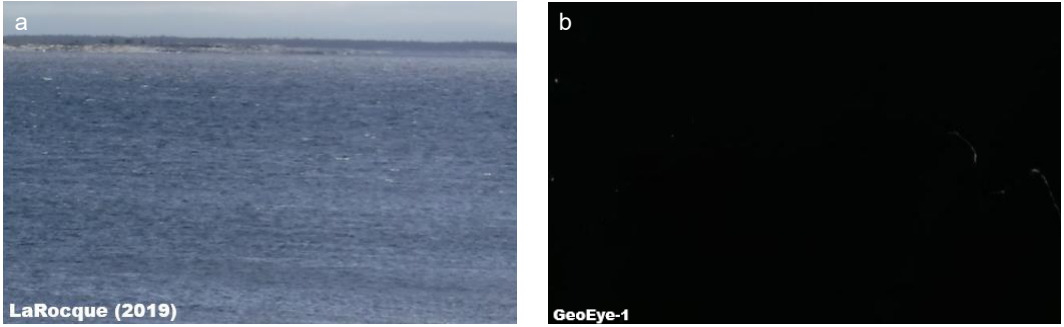


FIGURE S9. Photo and satellite image of deep water. Photos: Armand Larocque.

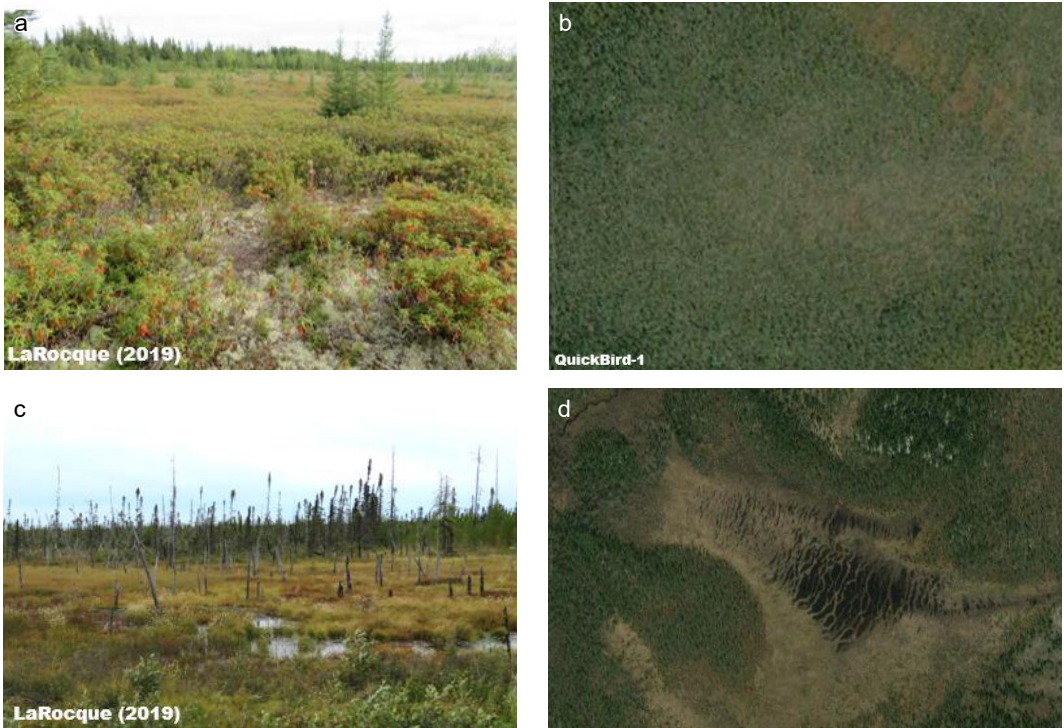


FIGURE S10. Photo and satellite image of peatland. This habitat regrouped habitats initially classified as open bog (upper panels) and muskeg (lower panels). Photos: Armand Larocque.

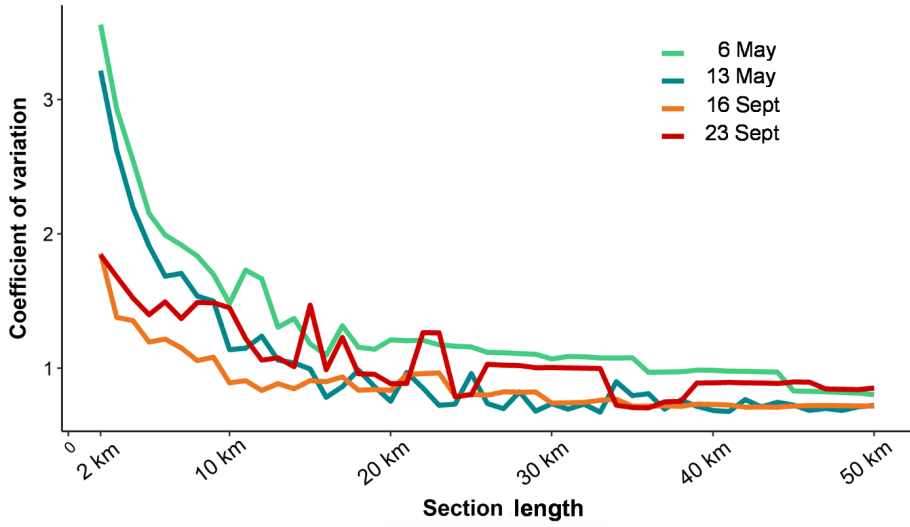


FIGURE S11. Coefficient of variation of Canada Goose (*Branta canadensis*) density (number of geese/km of helicopter path) calculated for increasing section length for each survey conducted in 2018 along the James Bay east coast.